

Historical Princess Study Guide

Taytu Betul

A Princess in the Era of Princes

Born: 1851

Died: February 11, 1918

Queen Consort of Shewa: 1883 – March 1889

Empress of the Ethiopian Empire: May 10, 1889 – December 12, 1913

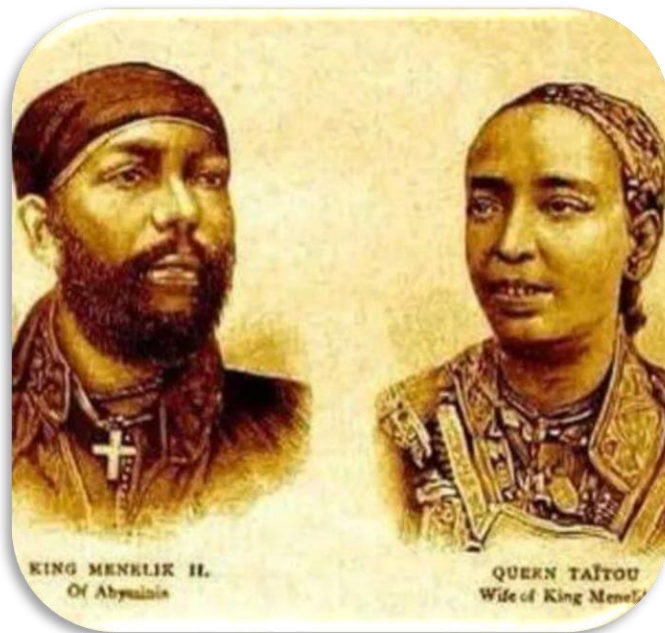
Spouse: Menelik II (final marriage)

Father: Prince Betul Hayle Maryam

Issue: none



Above information gathered from Wikipedia



Ethiopian nobility were expected to marry for political alliances. Taytu had been married most likely three times for reasons she did not chose, before she married Menelik II. Though also for political reasons, with her final marriage, she found a bond with an equal partner and because of this marriage, she was able to truly help her country.

Website/ Non-Fiction Book List

<https://en.unesco.org/womeninafrica/taytu-betul/biography>

https://en.wikipedia.org/wiki/Taytu_Betul

<http://www.afrikanheritage.com/empress-taytu-a-warrior-queens-story/>

African Princess by, Joyce Hansen

The Battle of Adwa by, RA Jonas

Era Literature/ Historical Fiction

Yafi's Family; An Ethiopian Boy's Journey of Love, Loss, and Adoption by, **Linda Pettitt**

Saba; Under the Hyena's Foot by, **Jane Kurtz**

Haddis Alemayehu (15 October 1910 – 6 December 2003), was a Foreign Minister and novelist from Ethiopia. His Amharic novel *Love to the Grave* is considered a classic of modern Ethiopian literature.



Music

Empress Taytu was known to play the begena,
which is a 10-string instrument.



Art

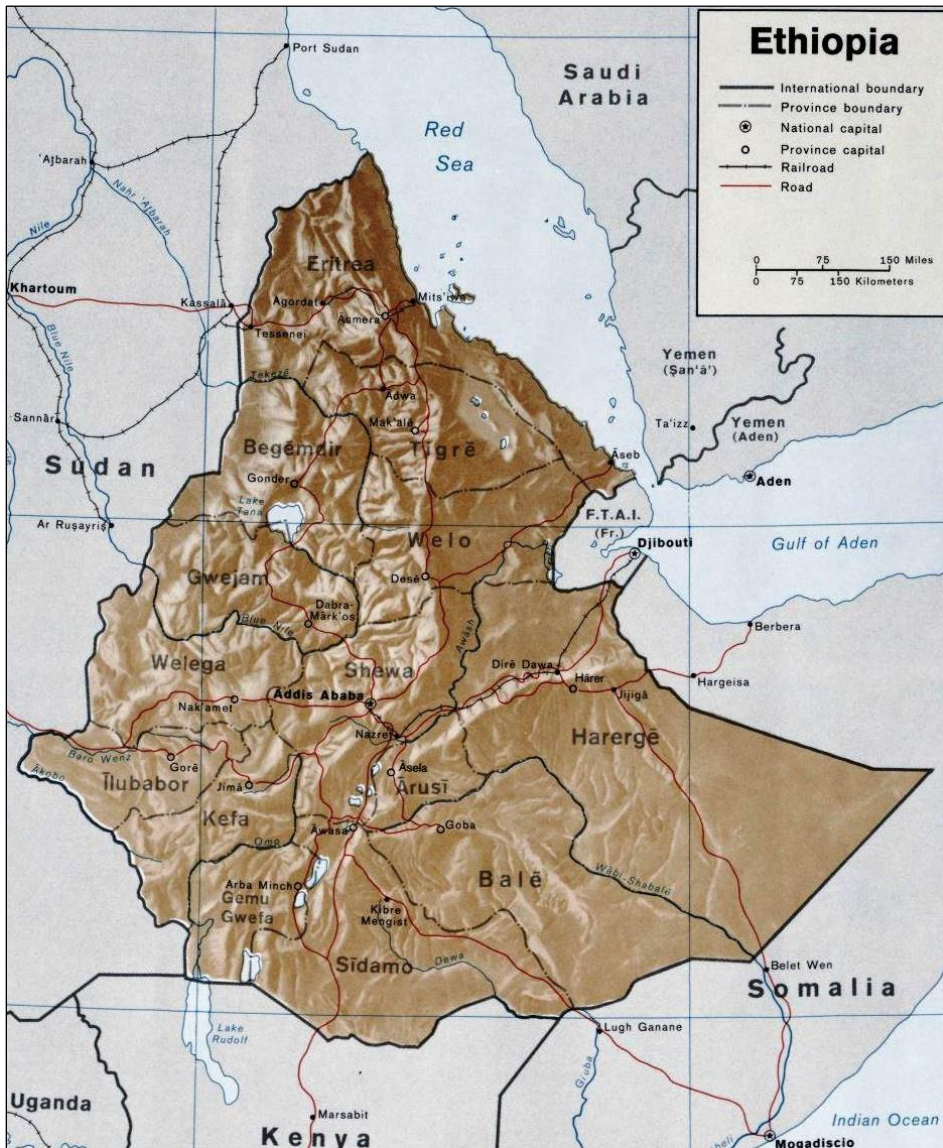


19th century pendant cross



Emperor Menelik II, the Archangel Raguel, and a court writer, c. 1889

Maps



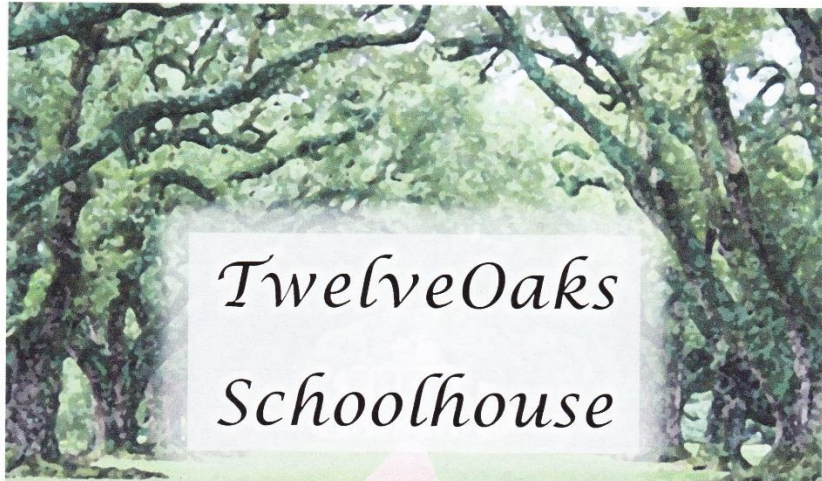
Discussion or Essay Questions

1. How many siblings did Taytu have? Why was this strange?
2. What subjects did she study growing up? What were some of her hobbies?
3. What religion was Taytu? What kind of wedding ceremony did she have?
4. How was she instrumental in keeping European colonization out of Ethiopia?
5. How was Ethiopia's new capital founded?
6. Explain how Taytu became disliked while her husband was well loved. How did this affect Taytu after her husband became ill?

Activities

1. Design and make your own begena. Find inspiration on Pinterest under "string instrument craft."
2. Try your hand at Christian Ethiopian style art. Or paint the battle of Adwa. (see examples below)
3. Study the "Era of the Princes." Who were the princes of the different Ethiopian regions at the time of Taytu Betul's life? List them on the map above.
4. Read a historical fiction (or another biography) about Ethiopia. Write a report.





Historical Princesses Study Guides – Taytu Betul

Thank you for downloading the Taytu Betul Study Guide. All of the curriculum on my website is intended for home use. There are Amazon Affiliated links on my site of any books or supplies I mention. If you decide to buy any of them, please use the links on my website. I take no credit for most of the images I use. It's either on-line clip art or pictures that I may or may not modify, or drawings from my son, Sky Bott. He asks that I mention his YouTube channel, MrSkyPanda. It's a family friendly channel. I'm especially proud of the CandyWorld Episodes.

If you really enjoy Twelve Oaks Schoolhouse curriculum and printables, consider donating on the website.

twelveoaksschoolhouse.com

Kendra Bott