

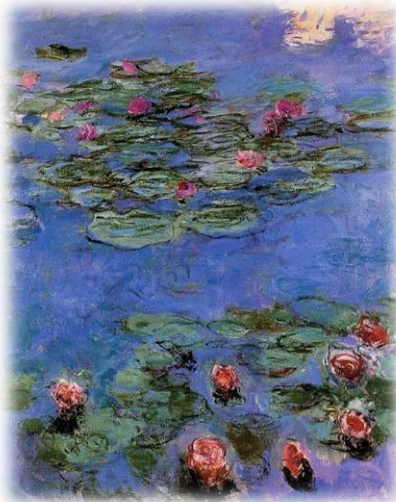
Claude Monet

Impressionist Painter

Born November 14, 1840 in Paris, France

Died December 5, 1926 in Giverny, France

Fun Fact: Monet enjoyed gardening and had six children.

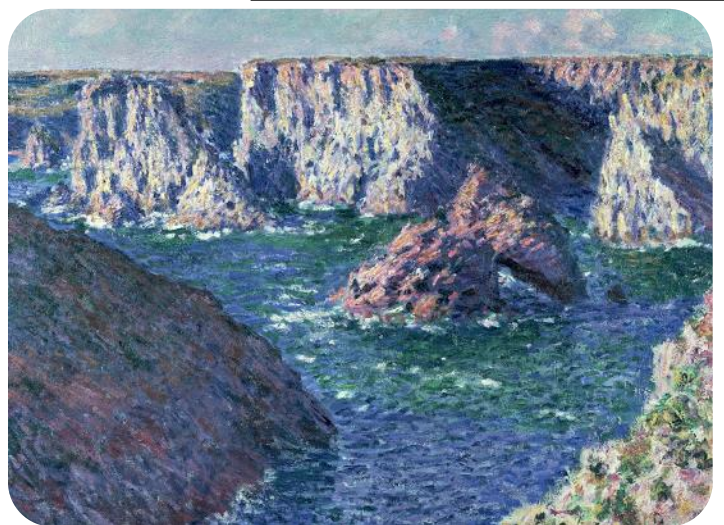


Monet often painted the same place at different times of the day, or different times of the year. The lighting and the colors made each painting unique.

The Water Lilies paintings (above) were of his backyard pond in Giverny, France. He painted over 200 water lily paintings from 1890 until his death.

His 30+ paintings of the Rouen Cathedral (left) were painted in 1892-1893

Below are two of Monet's 39 paintings from 1886 of Belle-Ile.



Book List:

Who Was Claude Monet? by Waldron, Ann

The Magical Garden of Claude Monet by Anholt, Laurence

13 Artists Children Should Know by Wenzel, Angela

Claude Monet; Sunshine and Waterlilies by Kelley, True

Claude Monet by Venezia, Mike

Websites:

<http://poulwebb.blogspot.com/2013/11/claude-monet-part-16-1885-1886.html>

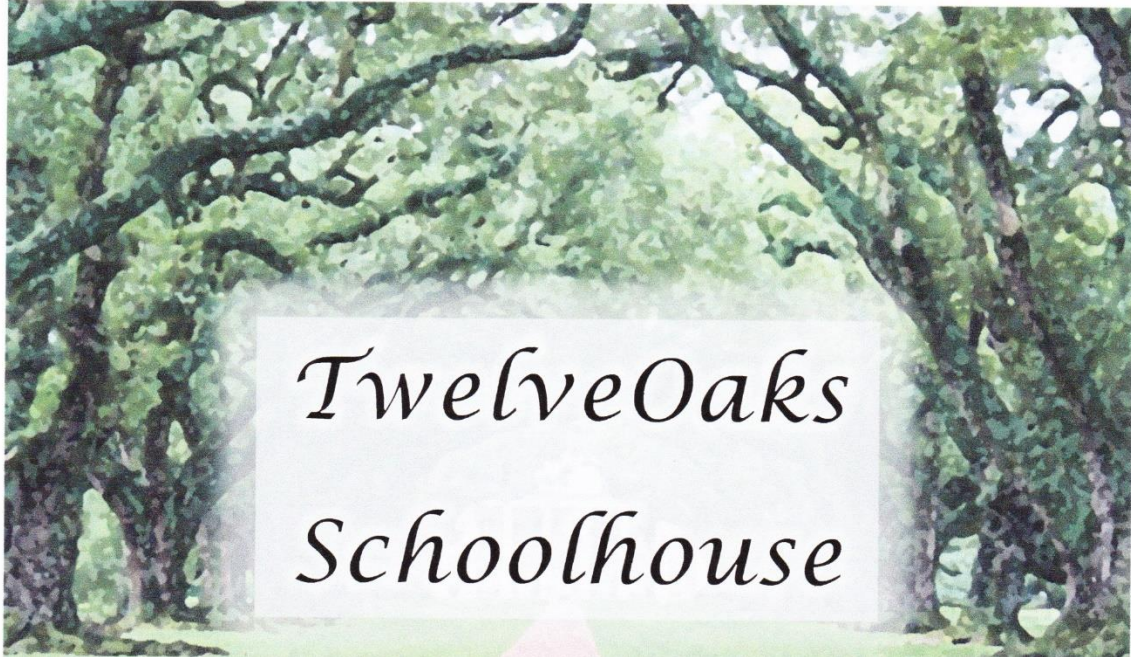
https://en.wikipedia.org/wiki/Claude_Monet

Activities:

1. Monet Finger Painting Activity - <https://www.learnplayread.com/toddlers-paint-water-lilies-with-claude-monet/> or try watercolors or Q-tip dot painting or tissue paper squares to recreate your own version of one of Monet's paintings.



2. Paint (or color) three pictures of your own backyard, one in the morning, one in the afternoon and one at night. How does the light affect the colors you use?
3. Monet spent most of his life in France. Study the country of France. How is it different now then when Monet lived there?
4. Color "The Stroll" (worksheet color page of a Monet painting) - <https://www.education.com/worksheet/article/the-stroll-by-monet/>



Art Appreciation ~ Claude Monet

Thank you for downloading the Monet Study Guide. All of the curriculum on my website is intended for home use. There are Amazon Affiliated links on my site of any books or supplies I mention. If you decide to buy any of them, please use the links on my website. I take no credit for most of the images I use. It's either on-line clip art or pictures that I may or may not modify, or drawings from my son, Sky Bott. He asks that I mention his YouTube channel, MrSkyPanda. It's a family friendly channel. I'm especially proud of the CandyWorld Episodes.

If you really enjoy Twelve Oaks Schoolhouse curriculum and printables, consider donating on the website.

twelveoaksschoolhouse.com

Kendra Bott